

Product portfolio



# Regenerative Solutions



[nobelbiocare.com](http://nobelbiocare.com)

YOU ARE WHAT  
WE STAND FOR.

creos™ was launched in

# 2014

creos™ xenoprotect  
creos™ allo.gain  
creos™ allo.protect

## 2016

creos™ xenogain  
creos™ xenogain collagen

## 2017

creos™ wound dressings  
(xenoplug, xenocote and xenotape)

## 2021

Cytoplast™ TXT-200  
Cytoplast™ Ti-PTFE  
creos™ allo.gain in a bowl

## 2023

Cytoplast™ RTM collagen  
Cytoplast™ PTFE sutures and membranes  
Resorba® Glycolon™  
Pro-Fix™ precision fixation system  
Master-Pin-Control hybrid pin system  
Cytoplast™ RTM wound dressings  
Cytoplast™ MicroDerm

# Regenerative solutions

## Nobel Biocare – your trusted regenerative partner for you and your patients

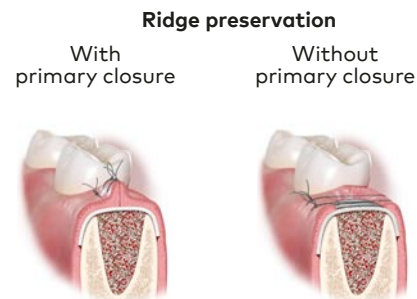
<b>Indication-based product overview</b>	<b>4</b>
<b>Bone grafts</b>	
creos™ allo.gain	6
creos™ dbm putty	6
creos™ xenogain	8
creos™ xenogain collagen	8
<b>Membranes</b>	
creos™ xenoprotect	10
Cytoplast™ RTM collagen	12
creos™ allo.protect	14
Cytoplast™ TXT-200 PTFE	16
Cytoplast™ Ti-reinforced PTFE	16
<b>Soft tissue matrix</b>	
Cytoplast™ MicroDerm	18
<b>Wound dressings</b>	
Cytoplast™ RTMPlug, RTMFoam and RTMTape	20
creos™ xenoplug, xenocote and xenotape	22
<b>Sutures</b>	
Cytoplast™ PTFE	24
Resorba® Glycolon™	25
<b>Fixation and tenting systems</b>	
Pro-Fix™ precision fixation system	26
Master-Pin-Control hybrid pin system	27
<b>Product listing with article numbers</b>	<b>28</b>
<b>References</b>	<b>36</b>







# Indication-based product overview

See article lists (p. 28–35) for most commonly used product codes.

**Note** See Instructions For Use for full prescribing information, including indications, contraindications, warnings and precautions.

Volumes and sizes listed are to be used as approximations and may vary depending on the defect/patient.



 Bone grafts	Allogenic bone graft substitute	<b>creos allo.gain</b>		
		corticocancellous	0.25 – 1.0 cc	0.25 – 1.0 cc
		demineralized cortical	0.25 – 1.0 cc	0.25 – 1.0 cc
		mineralized cortical	0.25 – 1.0 cc	0.25 – 1.0 cc
		mineralized cancellous	0.25 – 1.0 cc	0.25 – 1.0 cc
		min./demin. cortical	0.25 – 1.0 cc	0.25 – 1.0 cc
	dbm putty	0.25 – 1.0 cc	0.25 – 1.0 cc	
	Xenogenic bone graft substitute	<b>creos xenogain*</b>	0.25 – 0.5 g	0.25 – 0.5 g
	creos xenogain + 10% porcine collagen type I	<b>creos xenogain collagen</b>	0.1 – 0.25 g	0.1 – 0.25 g
 Membranes	Resorbable, xenogenic collagen membrane	<b>creos xenoprotect</b>	15 x 20 mm	
	Resorbable, firm collagen membrane	<b>Cytoplast RTM collagen</b>	15 x 20 mm	
	Resorbable allogenic barrier membrane	<b>creos allo.protect</b>	10 x 10 mm 15 x 20 mm	
	Non-resorbable high-density PTFE membrane	<b>Cytoplast TXT-200</b>		12 x 24 mm 12 x 30 mm 25 x 30 mm
	Non-resorbable titanium-reinforced high-density PTFE membrane	<b>Cytoplast Ti-PTFE</b>		ANL and AS
 Matrix	Micro-surfaced allogenic acellular dermal matrix	<b>Cytoplast MicroDerm</b>		
 Wound dressings	Absorbable wound dressing	<b>Cytoplast RTMPlug, RTMFoam and RTMTape</b>	Plug (fully intact sockets only)	
		<b>creos xenoplug, xenocote and xenotape</b>	Plug (fully intact sockets only)	
 Sutures	Non-absorbable PTFE suture – monofilament	<b>Cytoplast PTFE</b>	All sizes	All sizes
	Absorbable PGA/PCL suture – monofilament	<b>Resorba Glycolon</b>		All sizes
 Fixation systems	Titanium fixation pins	<b>Master-Pin-Control hybrid pin system</b>		
	Self-drilling titanium fixation screws	<b>Pro-Fix precision fixation system</b>		

\*Please consult article lists (p. 28–35) for conversion to volume (cc)

**Horizontal ridge augmentation**

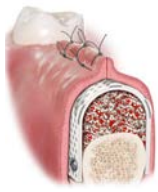
**Vertical ridge augmentation**

**Peri-implant defect**

**Sinus augmentation**

**Periodontal defects**

**Soft tissue augmentation (around teeth or implants)**

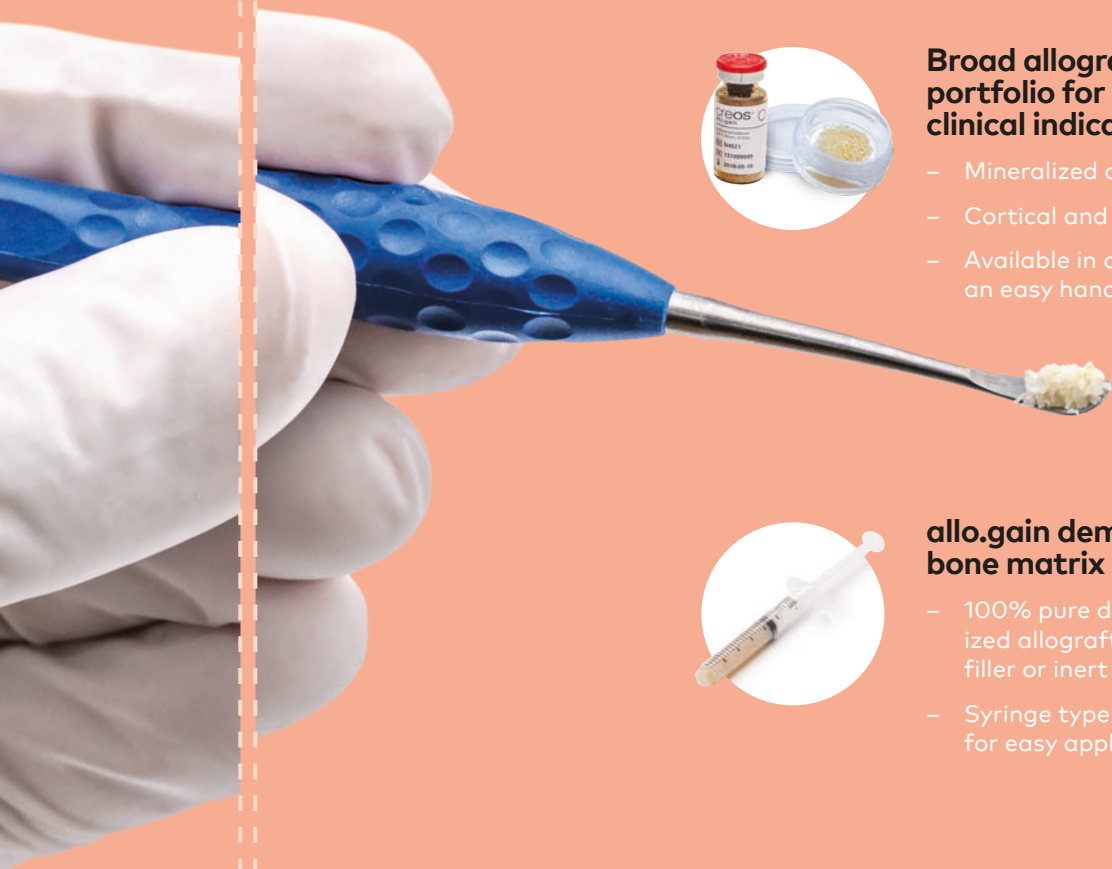


0.25 – 1.0 cc			1.0 – 2.0 cc		
		0.5 – 1.0 cc		0.25 cc	
0.25 – 1.0 cc		0.5 – 1.0 cc	1.0 – 2.0 cc	0.25 cc	
0.25 – 1.0 cc			1.0 – 2.0 cc		
0.25 – 1.0 cc		0.5 – 1.0 cc	1.0 – 2.0 cc	0.25 cc	
		0.5 – 1.0 cc		0.25 cc	
0.25 – 0.5 g	0.5 – 2 g	0.25 – 0.5 g	1 – 2 g	0.25 g	
0.25 – 0.5 g		0.1 – 0.25 g	0.25 – 0.5 g	0.1 – 0.25 g	
15 x 20 mm 25 x 30 mm	25 x 30 mm 30 x 40 mm	15 x 20 mm	15 x 20 mm 25 x 30 mm	15 x 20 mm	
15 x 20 mm 20 x 30 mm	20 x 30 mm 30 x 40 mm	15 x 20 mm	15 x 20 mm 20 x 30 mm	15 x 20 mm	
15 x 20 mm 20 x 30 mm		10 x 10 mm 15 x 20 mm	15 x 20 mm 20 x 30 mm	10 x 10 mm 15 x 20 mm	
		12 x 24 mm 12 x 30 mm 25 x 30 mm			
Shapes depending on defect	Shapes depending on defect	Shapes depending on defect			
					1 x 1 cm 1 x 2 cm 1 x 4 cm 2 x 4 cm
					Foam, Tape (for donor site)
					Cote, Tape (for donor site)
All sizes	All sizes	All sizes	All sizes	All sizes	
		All sizes	All sizes	All sizes	All sizes
Membrane fixation pins	Membrane fixation pins	Membrane fixation pins	Membrane fixation pins		
All types	All types	Membrane fixation screws	Membrane fixation screws		



# creos™ allo.gain

**A wide range of allograft materials, because all your cases are different**



## **Broad allograft portfolio for different clinical indications\***

- Mineralized and demineralized
- Cortical and cancellous
- Available in a bowl for an easy handling



## **allo.gain demineralized bone matrix (dbm) putty**

- 100% pure demineralized allograft with no filler or inert carrier
- Syringe type dispenser for easy application

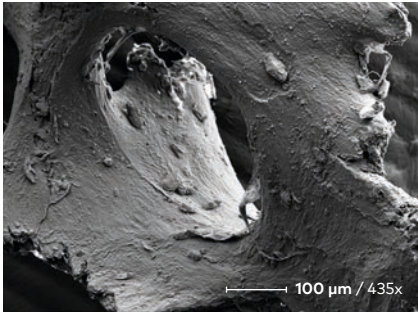
## **Ensuring safety and quality levels**

- A proprietary patented process of tissue cleaning and sterilization
- The tissue bank follows strict processing procedures in order to ensure safe tissue grafts of the highest quality for transplantation

\*See Instructions For Use for full prescribing information, including indications, contraindications, warnings and precautions



## creos™ allo.gain bone particulate: a wide range of options



Mineralized cancellous bone

### Mineralized cortical bone

Offers a high density bone with particle size range from 0.125 mm to 1 mm and available volume of 0.25 cc to 2.0 cc.

### Mineralized/demineralized cortical bone

Blend of 70% mineralized and 30% demineralized cortical bone.

### Mineralized corticocancellous bone

Blend of cortical and cancellous bone produced from sections of the ilium.

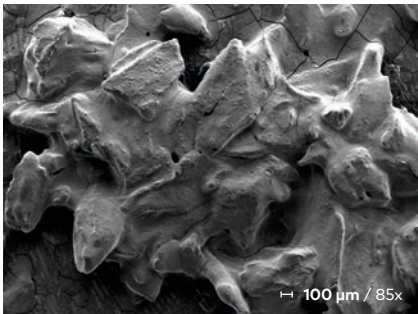
### Mineralized cancellous bone

A porous structured bone with particle size range from 0.25 mm to 1 mm and available volume of 0.25 cc to 2.0 cc.

### Demineralized cortical bone

Demineralized high density bone with particle size range from 0.125 mm to 1 mm and available volume of 0.25 cc to 2.0 cc.

## creos™ allo.gain demineralized bone matrix (dbm) putty



### 100% pure allograft

The creos™ allo.gain dbm putty is 100% pure demineralized allograft with no filler or inert carrier.

### Available in three volumes

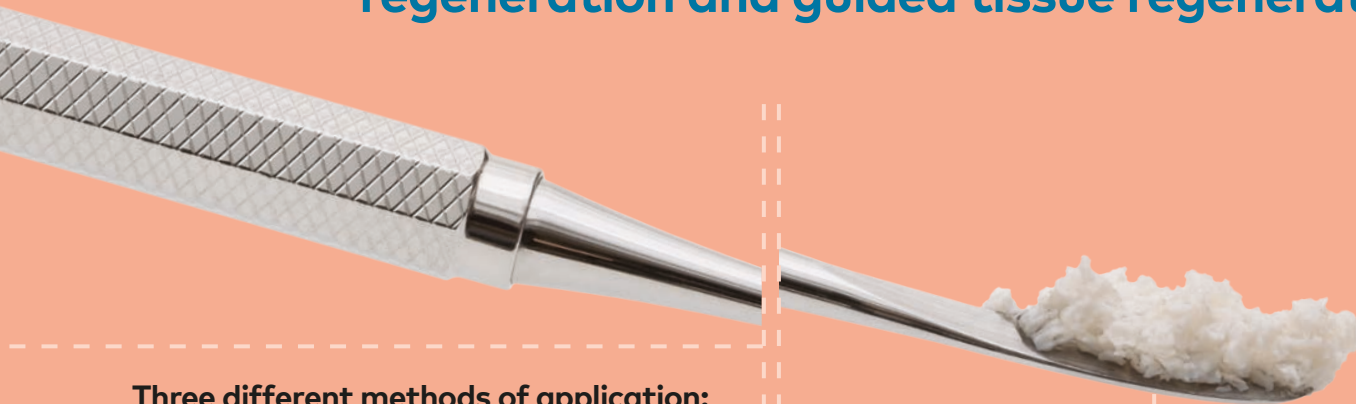
The creos™ allo.gain dbm putty is available in three different volumes: 0.5 cc, 1.0 cc and 2.5 cc. This means that the required amount can be used with minimal excess material.



Scan the code for  
clinical resources.

# creos™ xenogain

## Xenogenic bone graft used for guided bone regeneration and guided tissue regeneration



### Three different methods of application:



Vial



Bowl



Syringe

### Similar to human bone

- Chemical composition: Ca/P ratio
- Interconnected macropores<sup>1,2</sup>

### Easy handling

- Homogenous particle size<sup>1</sup>
- Hydrophilic for fast rehydration<sup>3,4</sup>

### Solid foundation for dental implant treatment

- Osteoconductive properties<sup>2</sup>
- Long-term volume stability<sup>6</sup>
- Uneventful healing<sup>4,6,7,8,9</sup>



"I appreciate its handling properties and I see its high hydrophilicity as a biological advantage in sinus grafting and peri-implant defect regeneration."

Dr. Werner Zechner, Austria



Bovine

# creos™ xenogain collagen



Block



Syringe

Purified cancellous bovine bone mineral granules and 10% porcine collagen in block form and syringe. The collagen helps to hold creos™ xenogain collagen in the desired place. Especially recommended for extraction socket management.



Bovine



Porcine



## Scaffold for successful regeneration

Preserved natural features of bone through optimized manufacturing process.<sup>2</sup>

### Chemical composition

With a calcium phosphate ratio that reflects the composition in human bone and a structure with low crystallinity, the body accepts creos™ xenogain as a suitable framework for bone formation.<sup>1</sup>

### Particle size

- Homogenous particle size<sup>1</sup>
- Maintains space for bone regeneration<sup>4</sup>

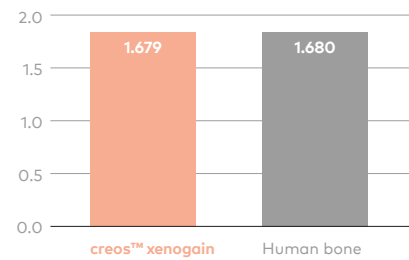
### Preserved nanostructure

Nanostructure preserved thanks to treatment at comparatively low temperature (600°C) and no sintering.<sup>2</sup>

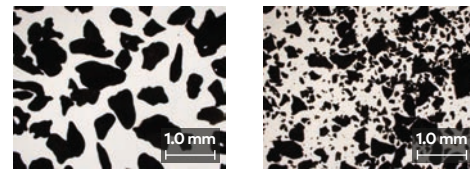
### Macro and micro-structure

Interconnected macropores allow cells to invade bone grafts and micropores contribute to capillary liquid uptake (hydrophilicity).<sup>10,11</sup>

Calcium phosphate ratio



Photographic micrograph of creos™ xenogain and reference product showing the particle size distribution (magnification 20x)



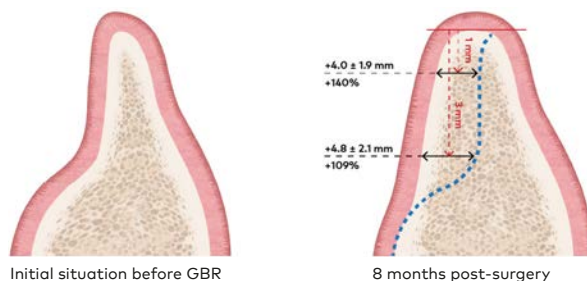
creos™ xenogain  
(0.2 - 1.0 mm)

Reference product  
(0.25 - 1.0 mm)

## Solid foundation for implant placement

The graft integrates with the newly formed bone, building a basis for successful implant placement.<sup>4</sup>

Schematic showing the defect and bone size prior to and after GBR



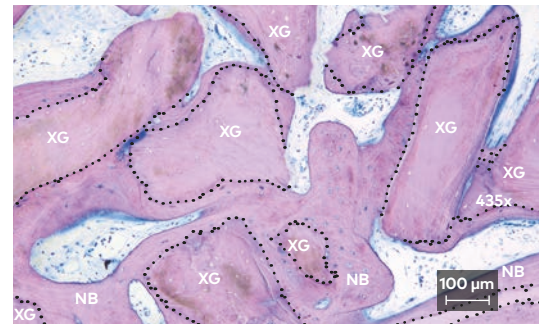
Initial situation before GBR

8 months post-surgery

In a multicenter clinical study involving 46 patients, bone increase after 8 months was 4.0 mm (+56.9 % gain) and 4.7 mm (51.0% gain) at 1 and 3 mm from the top of the crest, respectively.<sup>7</sup>

GBR led to robust bone regeneration during the 8 months of healing, enabling successful placement of 91 implants in 43 patients, with an average insertion torque of  $37.8 \pm 5.1$  Ncm.<sup>7</sup>

Histological cross section of the cellular components: new bone (NB), bone graft (XG). Bone-to-graft-particle contact shown by dashed line.



Histological assessment of the trephine cores showed 37.3 % of new bone, 39.1 % of graft material and 23.6 % of soft tissue (n = 6 cores, 3 patients).<sup>7</sup>



Scan the code for more resources.

# creos™ xenoprotect

Nobel Biocare's highest selling  
resorbable collagen membrane



## Easy handling<sup>1,2</sup>

- Does not stick to instruments
- Repositioning in-situ possible
- Low surface expansion when hydrated
- Both sides can face the defect

## High mechanical strength<sup>2,3,4</sup>

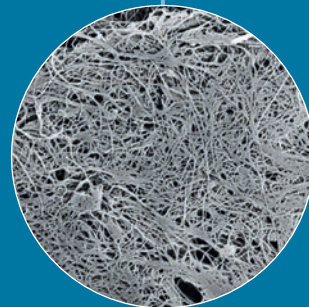
- High suture retention<sup>1,4,9</sup>
- Highly tear-resistant

## Natural collagen membrane

- Non-chemically cross-linked<sup>14</sup>
- Made from porcine collagen

## Facilitates bone gain<sup>2,3,5,6,7,8</sup>

- Tested and approved biocompatibility<sup>7,10</sup>
- Beneficial clinical results<sup>7,10</sup>



"What I like is that the handling is very easy. The mechanical stability is very high and when it is rehydrated it adapts very well to the underlying bone."

Dr. Bastian Wessing, Germany



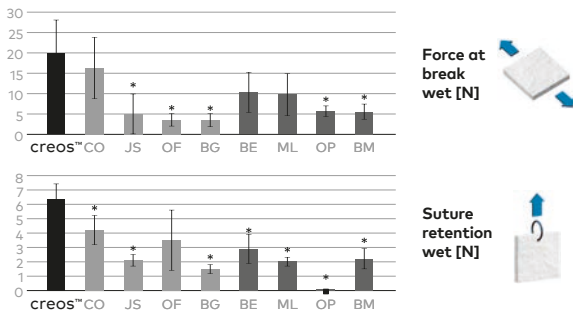
Porcine

## High mechanical strength

In an in vitro study aiming to compare the mechanical strength of commonly used native non-chemically cross-linked and chemically cross-linked collagen membranes<sup>4</sup>

- creos™ xenoprotect demonstrated the highest force at break, wet (21.2 N).
- creos™ xenoprotect had the highest suture retention when hydrated (6.1 N).

Comparison of commercial membranes in a hydrated state



Non-cross-linked collagen membranes (NXL) – CX: creos™ xenoprotect [Nobel Biocare]; CO: Copios [Zimmer]; JS: Jason [botiss]; OF: Osseoguard Flex [3i]; BG: Bio-Gide [Geistlich]

Cross-linked collagen membranes (XL) – BE: BioMend Extend [Zimmer]; ML: Mem-Lok [BioHorizons]; OP: OssixPlus [Datum Dental]; BM: BioMend [Zimmer];

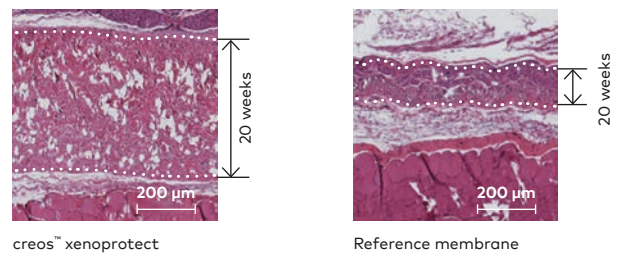
\*Statistically significant

## Provides a physical barrier to contain the bone graft material at the defect site<sup>1,2,3,5,6,11,12,13</sup>

Prevents ingrowth of surrounding tissue for a period of time that is long enough to allow bone regeneration to take place.

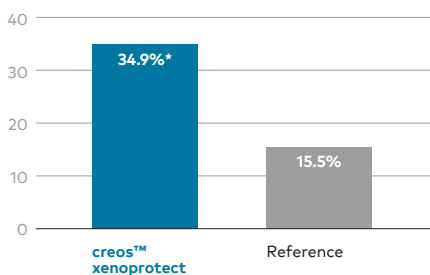
In an animal model, after 20 weeks, the thickness of xenoprotect decreased only slightly, whereas the reference membrane showed a thickness loss of around 50%, confirming the higher stability of xenoprotect against biodegradation in vivo.<sup>3</sup>

Representative histological images at 20 weeks implantation in a rat model.



## Facilitates new bone formation<sup>2,3,5,6,7,8</sup>

New bone formation (%)



In a comparative in vivo study, creos™ xenoprotect demonstrated significantly higher new bone formation in the central portion of the defect.

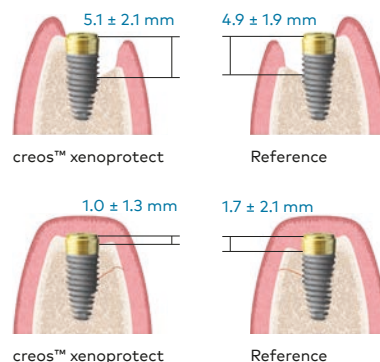
This increase in bone formation was associated with significantly increased expression of the growth factor *Bmp2*, which has a strong role in osteogenesis.<sup>7</sup>

\*Statistically significant

In a randomized controlled clinical trial, 24 patients were treated with creos™ xenoprotect and 25 with a reference membrane. In the creos™ xenoprotect group, the defect height reduced at 6-month re-entry by 81%.

In the reference membrane group, the defect height reduced at 6-month re-entry by 62%.<sup>5</sup>

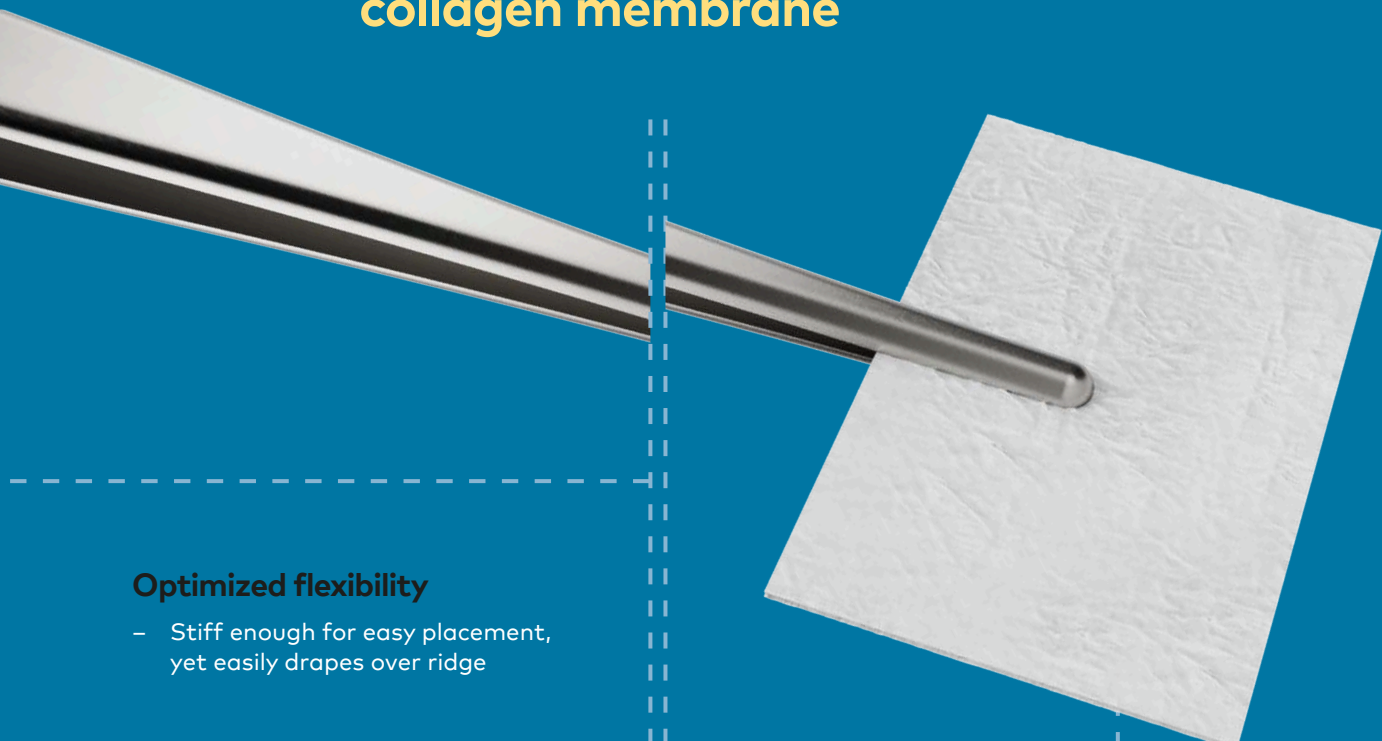
Schematic showing the defect height prior to treatment and 6 months after GBR



Scan the code for more resources.

# Cytoplast™ RTM collagen

Resorbable, firm and long-lasting  
collagen membrane



## Optimized flexibility

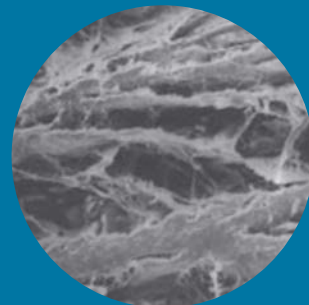
- Stiff enough for easy placement, yet easily drapes over ridge

## Long predictable resorption time

- Resorption time 26–38 weeks

## High tensile strength

- Suture or tack the membrane in place without tearing



## Manufactured from highly purified Type 1 bovine Achilles tendon

Reconstituted fiber construction allows tissue integration while preventing direct passage of epithelial cells



Bovine

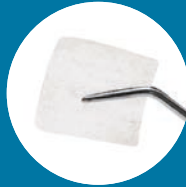






# creos™ allo.protect

An effective and reliable barrier



**allo.protect pericardium membrane**

- Durable protection

## Ensuring safety and quality levels\*

- A proprietary patented process of tissue cleaning and sterilization
- The tissue bank follows strict processing procedures in order to ensure safe tissue grafts of the highest quality for transplantation



\*See Instructions For Use for full prescribing information, including indications, contraindications, warnings and precautions



## creos™ allo.protect pericardium membrane

### Three sizes

creos™ allo.protect is available in three different sizes: 10 x 10 mm, 15 x 20 mm and 20 x 30 mm.

### Easy to handle

Easy to tack and suture with high tear resistance. Adapts well to surface contours and maintains shape and size once placed.

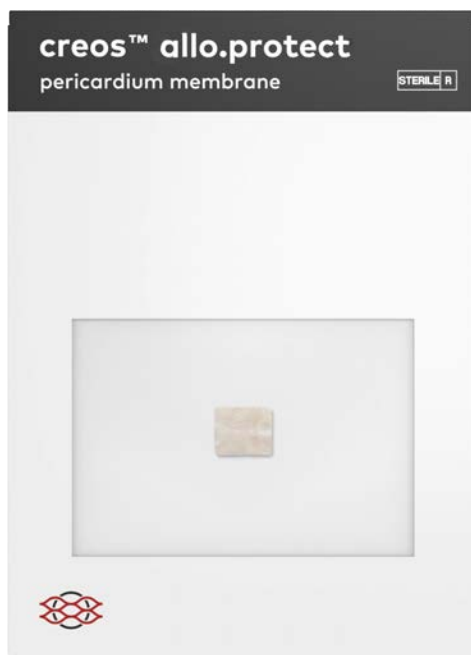
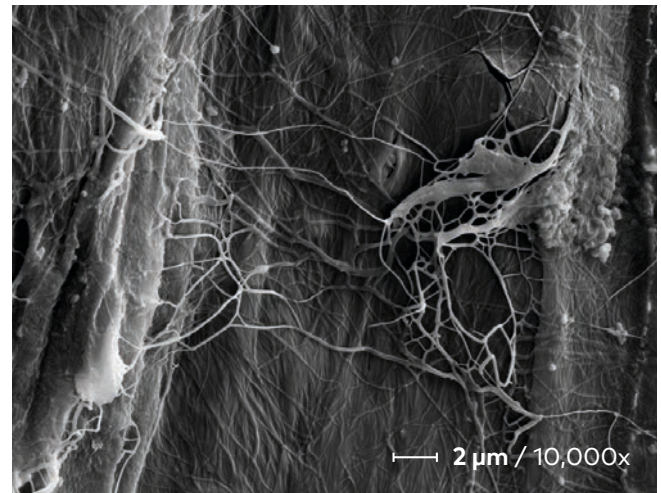
### Durable protection

Strong and stable due to the pore structure of native pericardium. Slow degradation for an effective barrier during the healing process.

### Biocompatible and tissue friendly

Preservation of the native pericardium collagen matrix and its mechanical properties.

Its native three-dimensional interconnective structure gives a longer time to degradation than other collagen sources.



Scan the code for  
clinical resources.

# Cytoplast™ PTFE

**Non-resorbable dense PTFE membrane for extraction socket management, ridge augmentations and grafting of large defects**



## Cytoplast™ TXT-200 PTFE membrane

### **Purposely leave the membrane exposed**

Preservation of the soft tissue architecture and keratinized mucosa

### **Non-resorbable**

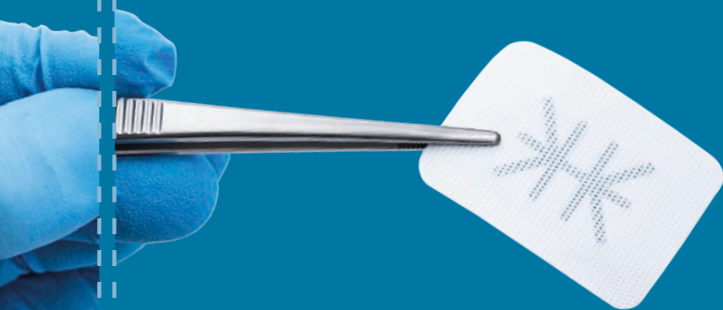
Will not resorb prematurely – you dictate healing time

### **100% dense (non-expanded) PTFE**

Impervious to bacteria – pore size less than 0.3 µm

### **Soft tissues attaches to, but doesn't grow through, the membrane.**

Exposed membrane allows for non-surgical removal; no anesthesia required



## Cytoplast™ Ti-reinforced PTFE membrane

### **Delicate, lightweight framework**

Easy to trim and compliant with the overlying soft tissues

### **Less is more**

Less titanium bulk allows for greater versatility in shaping and placement, providing additional stability in large, non-spacemaking osseous defects

### **Handling options**

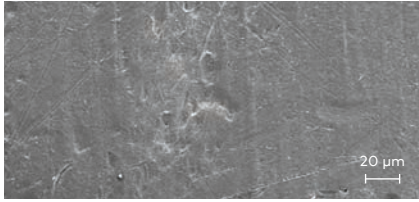
Broad portfolio with 15 shapes in two thicknesses

### **Traditional frame design**

Incorporating delicate and strategically-placed titanium "struts" with more than 25 years of clinical history and successful use in GBR

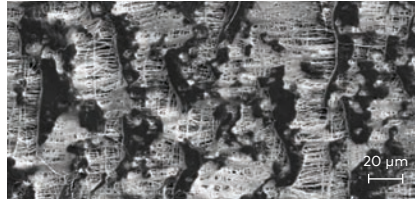
## Unique properties of dense PTFE membranes

### Dense PTFE



SEM image courtesy of Schüpbach Ltd, Switzerland.

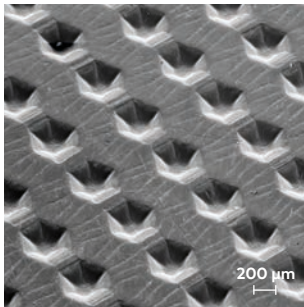
### Expanded PTFE



SEM image courtesy of Schüpbach Ltd, Switzerland.

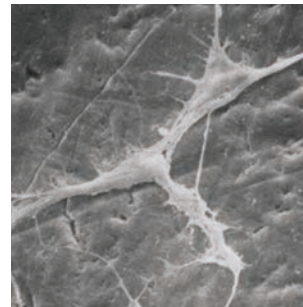
Dense PTFE was designed to withstand exposure in the oral environment, which represents an improvement to earlier versions of expanded PTFE in applications such as ridge preservation where deliberate membrane exposure offers several advantages.

## Designed to aid in membrane stabilization



SEM image courtesy of Schüpbach Ltd, Switzerland.

Hexagonal surface dimples provide a textured surface that increases the area available for cellular attachment without increasing porosity. The textured surface is designed to help stabilize the membrane and the soft tissue flap.

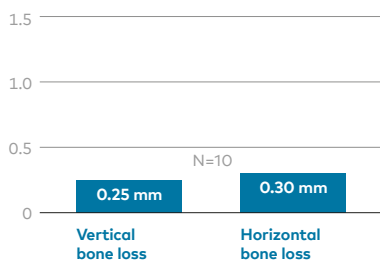


Although PTFE is inherently a non-stick material, cells attach to the outside of the dense PTFE membranes. Cellular adhesion is important to create a seal around the edges of exposed dense PTFE membranes or to support primary closure in larger graft applications.

## Clinical evidence

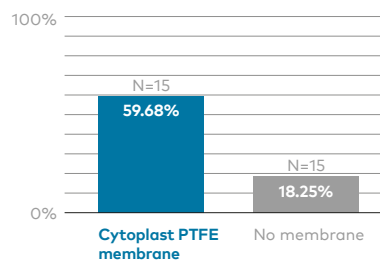
### Efficacy

Bone loss 1-year post-extraction<sup>1</sup>



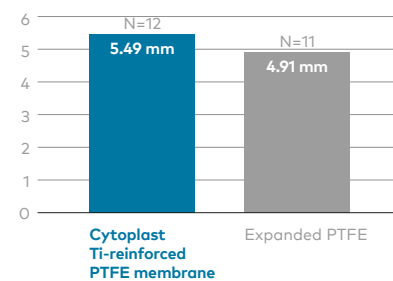
Vertical bone loss measured at crest. Horizontal measured from stent to buccal plate.

Soft tissue regeneration 90 days post-extraction<sup>2</sup>



Measured as reduction of the occlusal distance between buccal and lingual gingival margins.

Vertical ridge augmentation around implants<sup>3</sup>



Mean vertical bone regeneration.

### Predictability

In two separate studies treating a total of 696 extraction sites using dense PTFE membranes in an exposed technique, there were no reported infections.<sup>4,5</sup>



Scan the code for more resources.

# Cytoplast™ MicroDerm

A micro-surfaced allogenic  
acellular dermal matrix



## Benefits

- Rapidly hydrates within 60 seconds upon contact with blood or saline solution
- Strict tolerances on thickness for consistent handling and predictability
- Not side specific

## Technical specifications

- Shelf life of 5 years
- Terminally sterilized to a SAL of  $10^{-6}$
- Packaged dry
- Manufactured using a proprietary series of soaks and rinses to effectively clean and disinfect the tissue without the use of harsh chemicals
- Store at room temperature

## Indications\*

- Used for repair or replacement of damaged or inadequate soft tissue
- Root coverage
- Gingival augmentation
- Soft tissue augmentation around implants



"The tissue is very easy to handle when applying to your surgery site and the hydration time is shorter than its competitors. I believe its strongest clinical characteristic is the immediate adsorption of blood into the MicroDerm graft as you place into the recipient site. I am very pleased with the results I'm seeing."

Dr. Reid Lester, United States

\*See Instructions For Use for full prescribing information, including indications, contraindications, warnings and precautions



## Dual-sided micro-cuts to increase surface area

Micro-cut channels shorten pathways for vascularization and increase tissue surface area available for attachment.



## Cytoplast™ MicroDerm case study

Case photos provided by Shaun Rotenberg, DMD



Pre-op



Day 0  
MicroDerm placed



Day 0  
Sutured



2 weeks post-op



9 weeks post-op



"The early healing and soft tissue appearance is really where MicroDerm shines. Tissue never looks this good so early on with traditional allograft."

Dr. Shaun Rotenberg, United States

## Available sizes

Thickness 1.2 mm +/- 0.2 mm



CMD1010NB  
1 x 1 cm, 1/box



CMD1020NB  
1 x 2 cm, 1/box



CMD1040NB  
1 x 4 cm, 1/box



CMD2040NB  
2 x 4 cm, 1/box

## After hydration



Cytoplast™ MicroDerm becomes soft and pliable.



Scan the code for more resources.

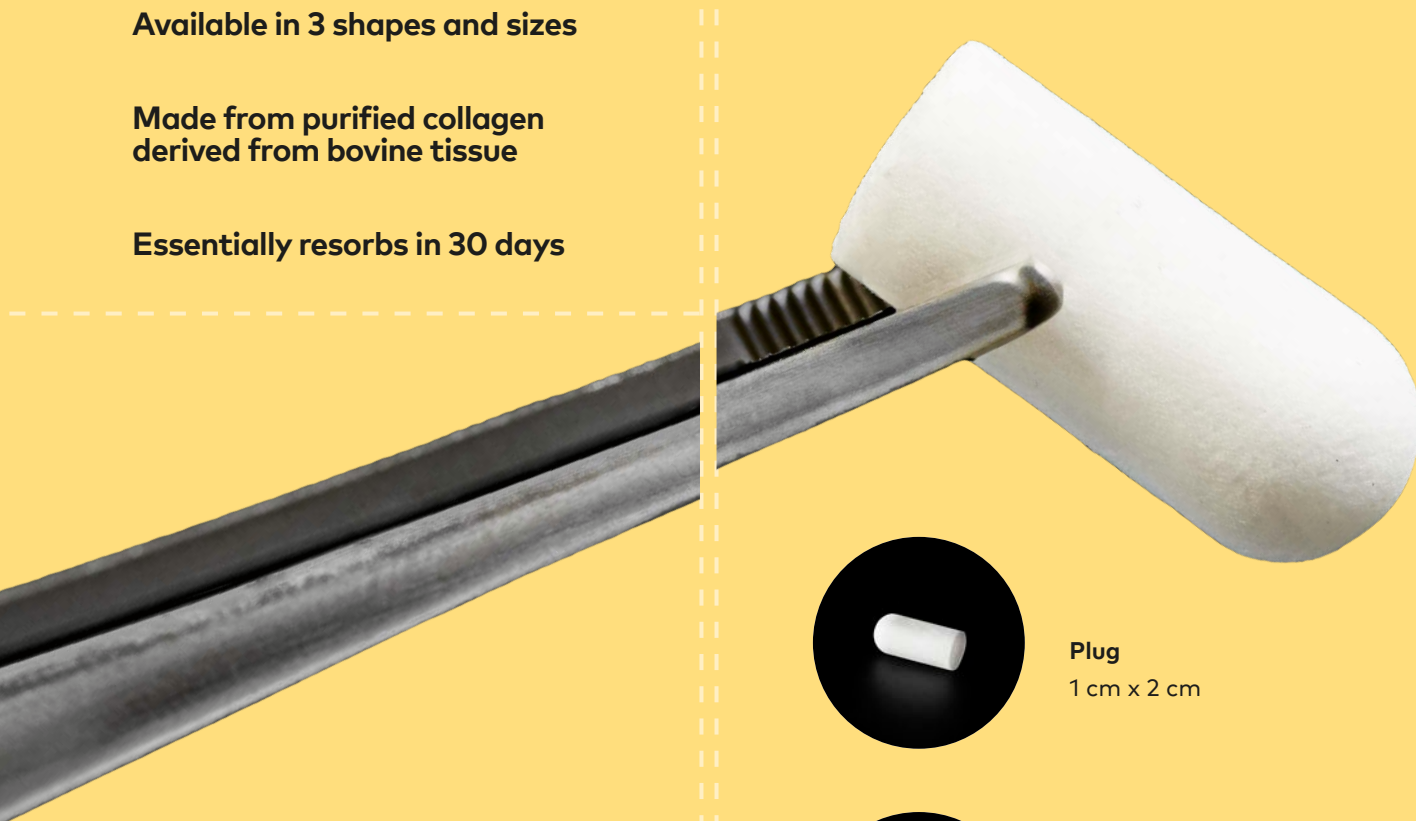
# Cytoplast™ RTM wound dressings

Absorbable wound dressings to protect  
wound beds and aid in wound healing

Available in 3 shapes and sizes

Made from purified collagen  
derived from bovine tissue

Essentially resorbs in 30 days



**Plug**  
1 cm x 2 cm



**Foam**  
2 cm x 4 cm x 3 mm (thick)



**Tape**  
2.5 cm x 7.5 cm x 1 mm (thick)

## Applications\*

- Surgical wounds
- Periodontal surgical wounds
- Extraction sites
- Dental sores
- Oral ulcers (non-infected or viral)
- Suture sites
- Burns
- Traumatic wounds

\*See Instructions For Use for full prescribing information, including indications, contraindications, warnings and precautions



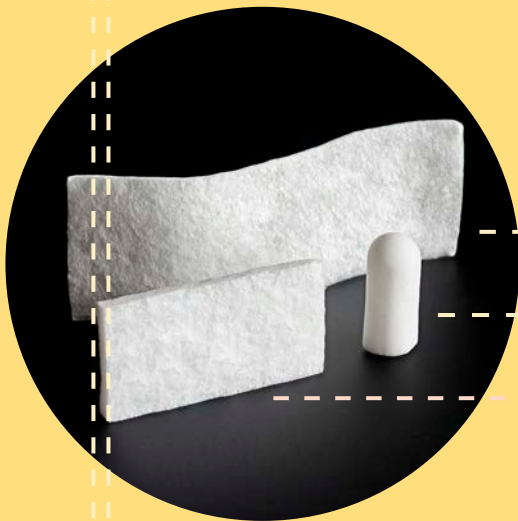
Bovine



Scan the code for  
more resources.

# creos™ absorbable collagen dental wound dressings

Complementing your regenerative set

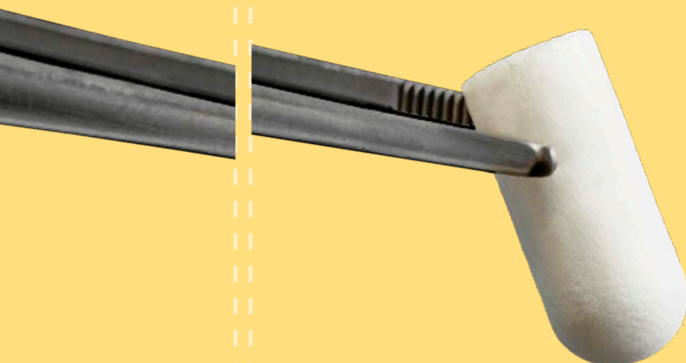


Three different shapes

**creos™ xenotape**

**creos™ xenoplug**

**creos™ xenocote**



## Features

- Soft, white, pliable, non-friable, absorbent sponges made from collagen obtained from bovine deep flexor (Achilles) tendons.
- Indicated for application to moist or bleeding clean oral wounds created during dental surgery, to control bleeding and protect the surface of the wound from further injury.
- Can be used during surgical procedures prior to wound closure or left in-situ.



## Applications

Depending on the chosen wound dressings product, one or more of the following applications are suitable\*:

- Minor oral wounds
- Closure of grafted sites
- Repair of Schneiderian membrane
- Palatal donor sites
- Mucosal flaps
- Extraction sites
- Biopsy sites

\*See Instructions For Use for full prescribing information, including indications, contraindications, warnings and precautions.

Arrive ready to use and are easy to handle.

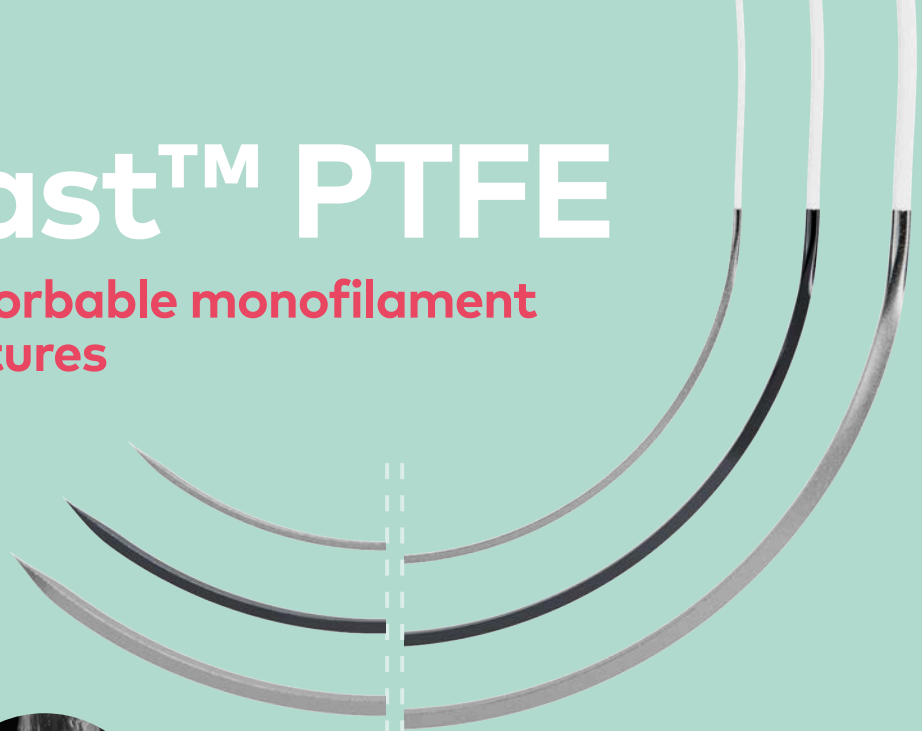


Scan the code for  
more resources.

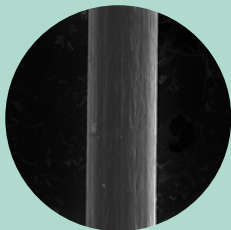


# Cytoplast™ PTFE

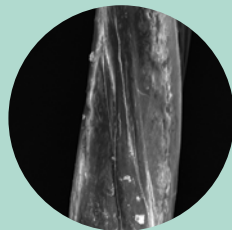
## Non-absorbable monofilament PTFE sutures



### Smooth monofilament rod



**Cytoplast™ PTFE**  
350x magnification



**PTFE Competitor**  
350x magnification

**100% medical grade PTFE** Biologically inert

**Monofilament** Does not wick bacteria

**Soft (not stiff)** Comfortable for patients

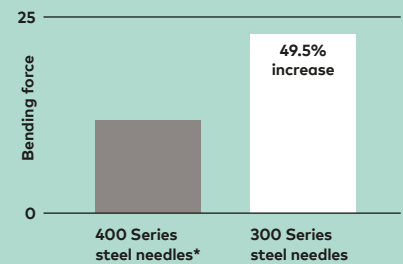
**Little to no package memory** Excellent handling, knots securely

**Non-resorbable** Keeps the surgical site reliably closed

### Advantages of the 300 series stainless steel needles

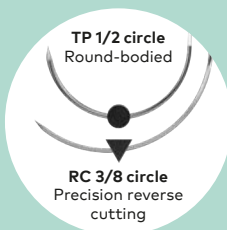
- Gold standard material for suture needles
- Increased needle strength and needle sharpness
- Less force to penetrate

### Resistance to bending

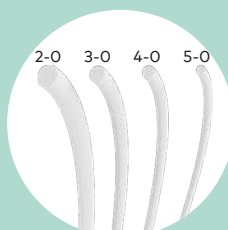


\*common in dentistry

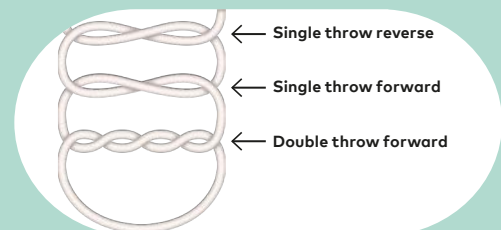
### Needle shapes



### Thread diameters



### Recommended knot<sup>1</sup>



# Resorba® Glycolon™

**Absorbable monofilament  
PGA/PCL sutures**



**PGA – PCL copolymer** Polyglycolic acid and polycaprolactone

**Monofilament suture** Provides excellent handling properties

**Monofilament** Does not wick bacteria

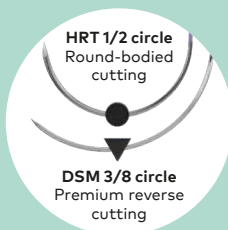
**Allows** Atraumatic passage through the tissue

**Maintains** 50% of its tensile strength for 11–13 days

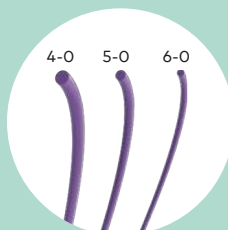
## Advantages of the 300 series stainless steel needles

- Black needles
- Manufactured from premium tempered black
- 300 series stainless steel
- Black steel provides more contrast in the mouth for easier visualization
- Dark color doesn't reflect light, which is advantageous when suturing under magnification

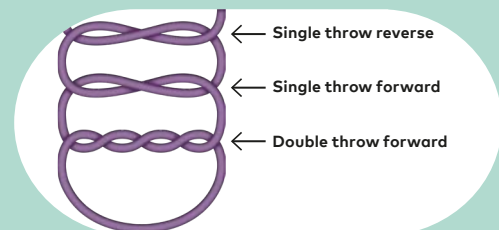
### Needle shapes



### Thread diameters



### Recommended knot<sup>1</sup>



# Pro-Fix™ precision fixation system

Fast and easy placement  
of membranes, bone blocks  
and tenting screws



## Versatility and adaptability

- Variety of bone fixation, membrane fixation and tenting screws
- Instruments designed to work universally with all screw types

## Ease of use

- Autoclavable kit
- Conveniently stores fixation instruments and up to 100 fixation screws
- Designed for easy identification, storage and simple reordering of the screws.

## Stable and secure fixation

- Easy pick-up of screws, stable transfer to the surgical site, quick engagement into the cortical bone



## Membrane fixation screws

to secure membranes and mesh

- Self-drilling design
- Quick engagement in cortical bone
- No mallet or pilot holes needed



## Tenting screws

to maintain space under membranes in horizontal and vertical augmentation procedures

- Self-drilling tip, polished neck, and broader head



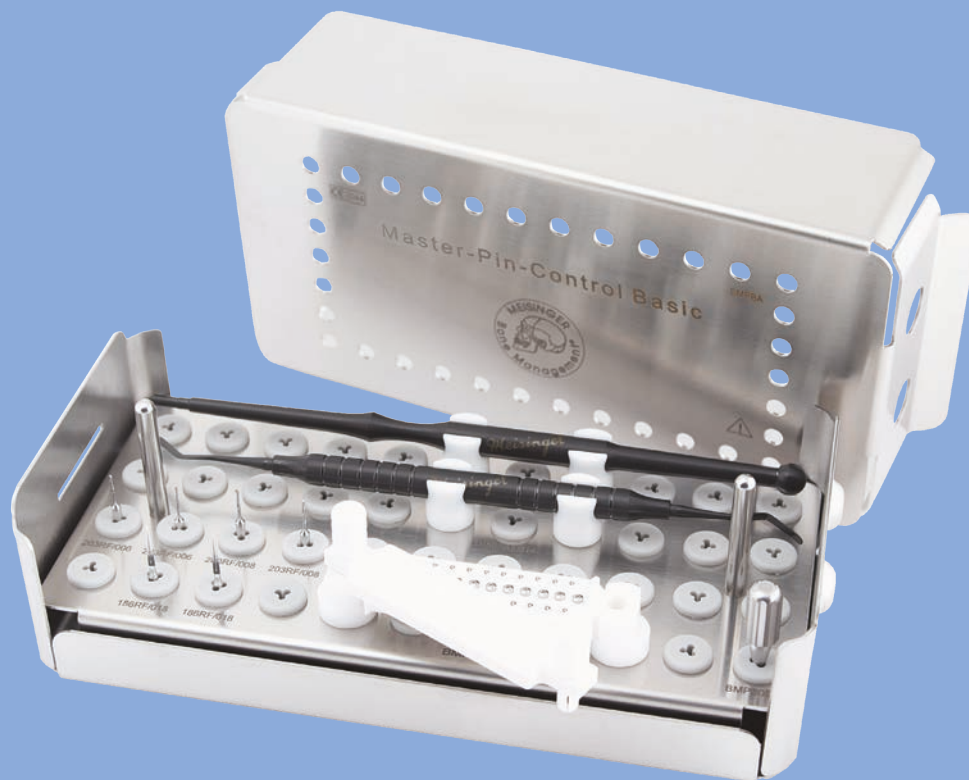
## Bone fixation screws

to stabilize, fixate and support bone grafts

- Self-tapping threads
- Threads with a cutting flute for easier insertion into harder bone
- Head design allows screw to be screwed down flush to bone surface

# Master-Pin-Control hybrid pin system

Precision fixation system



## Versatility and adaptability

- Avoids micromobility of graft
- Fixation of absorbable and non-absorbable membranes

## Ease of use

- Extremely sharp tip
- Allows for precise placement into cortical bone



## Replacement screws

- Hybrid of screw and pin
- The mini-threads on the pins increase the surface area of the shaft to allow for stability and easy removal



## Long screwdriver

- Designed by Dr. Istvan Urban with Meisinger to make pin removal easier in hard-to-reach areas

# Products

## creos™ allo.gain

Bone particulate

Vial	min/demin cortical			mineralized corticocancellous		mineralized cancellous			mineralized cortical			demineralized cortical	
	Medium 0.25-1 mm	Medium 0.25-1 mm	Large 0.5-1 mm	Medium 0.25-1 mm	Large 0.5-1 mm	Small 0.125-0.85 mm	Medium 0.25-1 mm	Large 0.5-1 mm	Small 0.125-0.85 mm	Large 0.5-1 mm	Small 0.125-0.85 mm	Large 0.5-1 mm	
0.25 cc		N4510	N4511	N4210	N4211	N4110	N4111	N4112	N4310	N4311			
0.50 cc	N4410	N4520	N4521	N4220	N4221	N4120	N4121	N4122	N4320	N4321			
1.00 cc	N4420	<b>N4530</b>	N4531	<b>N4230</b>	N4231	N4130	N4131	N4132	N4330	N4331			
2.00 cc	N4430	<b>N4540</b>	N4541	N4240	N4241	N4140	N4141	N4142	N4340	N4341			

Bowl	min/demineralized cortical			mineralized corticocancellous		mineralized cancellous		mineralized cortical		
	Small 0.125-0.85 mm	Medium 0.25-1 mm	Large 0.5-1 mm	Medium 0.25-1 mm	Large 0.5-1 mm	Medium 0.25-1 mm	Large 0.5-1 mm	Small 0.125-0.85 mm	Medium 0.25-1 mm	Large 0.5-1 mm
0.25 cc	N4310-B		N4311-B	N4510-B	N4511-B	N4210-B	N4211-B	N4110-B	N4111-B	N4112-B
0.50 cc	N4320-B	N4410-B	N4321-B	N4520-B	N4521-B	N4220-B	N4221-B	N4120-B	N4121-B	N4122-B
1.00 cc	N4330-B	N4420-B	N4331-B	<b>N4530-B</b>	N4531-B	<b>N4230-B</b>	N4231-B	N4130-B	N4131-B	N4132-B
2.00 cc	N4340-B	N4430-B	N4341-B	<b>N4540-B</b>	N4541-B	N4240-B	N4241-B	N4140-B	N4141-B	N4142-B





## creos™ allo.gain dbm putty

Size	Article no.
0.50 cc	<b>N6110</b>
1.00 cc	N6120
2.50 cc	N6130



### Symbol glossary

 Temperature limit

 Upper limit of temperature

### Most commonly sold articles



## creos™ xenogain

Xenogenic bone graft substitute

Weight	Granule size	Volume	Vial	Bowl	Syringe
0.25 g	Small (0.2 – 1.0 mm)	0.36 cc	N1110	<b>N1110-B</b>	N1210
	Large (1.0 – 2.0 mm)	0.54 cc	N1111	N1111-B	N1211
0.5 g	Small (0.2 – 1.0 mm)	0.82 cc	N1120	<b>N1120-B</b>	N1220
	Large (1.0 – 2.0 mm)	1.27 cc	N1121	N1121-B	N1221
1.00 g	Small (0.2 – 1.0 mm)	1.71 cc	N1130	N1130-B	
	Large (1.0 – 2.0 mm)	2.69 cc	N1131	N1131-B	
2.00 g	Small (0.2 – 1.0 mm)	3.64 cc	N1140	N1140-B	
	Large (1.0 – 2.0 mm)	5.74 cc	N1141	N1141-B	



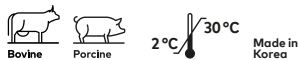
## creos™ xenogain collagen

creos™ xenogain + 10% porcine collagen type I

Weight	Block size	Article no.
0.1 g	6 x 6 x 6 mm	<b>N1320</b>
0.25 g	7 x 8 x 9 mm	N1330
0.5 g	9 x 10 x 11 mm	N1340



Weight	Syringe size	Article no.
0.25 g	4.6 x 40 mm	<b>N1410</b>
0.5 g	5.6 x 45 mm	N1420



Most commonly sold articles

## creos™ xenoprotect

Nobel Biocare's highest selling  
resorbable collagen membrane

Size	Article no.
15 x 20 mm	<b>N1520</b>
25 x 30 mm	N2530
30 x 40 mm	N3040



## Cytoplast™ RTM collagen

Resorbable, firm, collagen membrane

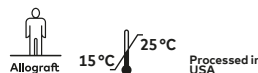
Size	Units/box	Article no.
15 x 20 mm	2	<b>CLMRTM1520</b>
20 x 30 mm	2	CLMRTM2030
30 x 40 mm	2	CLMRTM3040



## creos™ allo.protect

pericardium membrane

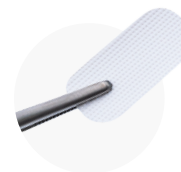
Size	Article no.
10 x 10 mm	N7110
15 x 20 mm	<b>N7120</b>
20 x 30 mm	N7140



## Cytoplast™ TXT-200 PTFE membrane

Non-resorbable, high-density PTFE membrane
















Shape	Picture	Size	Thickness	Article no.	Units/box	Description
Small		12 x 24 mm	200 µm	TXT1224-1	1	Designed specifically for extraction site grafting and augmentation procedures where exposure to the oral cavity is common
			200 µm	<b>TXT1224</b>	10	
Medium		12 x 30 mm	200 µm	TXT1230	10	
			200 µm	TXT2530-1	1	
Large		25 x 30 mm	200 µm	TXT2530-1	1	
			200 µm	TXT2530	4	



Most commonly sold articles

# Cytoplast™ Ti-reinforced PTFE membrane

Non-resorbable, titanium reinforced, high-density PTFE membrane

Shape	Picture	Size	Thickness	1 unit/box	2 units/box	Description
ANL		12 x 24 mm	150 µm	<a href="#">TI150ANL-N-1</a>	TI150ANL-N-2	Designed for narrow single-tooth extraction sites, especially where one bony wall is missing
			250 µm	TI250ANL-N-1	TI250ANL-N-2	
ANL0		12 x 30 mm	150 µm	n/a	n/a	
			250 µm	TI250ANL30-N-1	TI250ANL30-N-2	
AS		14 x 24 mm	150 µm	<a href="#">TI150AS-N-1</a>	TI150AS-N-2	Designed for single-tooth extraction sites, especially where one or more bony walls are missing
			250 µm	TI250AS-N-1	TI250AS-N-2	
BL		17 x 25 mm	150 µm	TI150BL-N-1	TI150BL-N-2	Designed for large buccal defects
			250 µm	TI250BL-N-1	TI250BL-N-2	
BLL		17 x 30 mm	150 µm	TI150BLL-N-1	TI150BLL-N-2	
			250 µm	TI250BLL-N-1	TI250BLL-N-2	
PS		20 x 25 mm	150 µm	TI150PS-N-1	TI150PS-N-2	Designed for large extraction sites and limited ridge augmentation
			250 µm	TI250PS-N-1	<a href="#">TI250PS-N-2</a>	
PST		36 x 25 mm	150 µm	TI150PST-N-1	TI150PST-N-2	Designed for large extraction sites and limited ridge augmentation in the anterior maxilla
			250 µm	TI250PST-N-1	TI250PST-N-2	
PL		25 x 30 mm	150 µm	TI150PL-N-1	TI150PL-N-2	Designed for large bony defects, including ridge augmentation
			250 µm	<a href="#">TI250PL-N-1</a>	TI250PL-N-2	
PLT		30 x 41 mm	150 µm	TI150PLT-N-1	TI150PLT-N-2	Designed for large bony defects, including ridge augmentation in the anterior maxilla
			250 µm	TI250PLT-N-1	TI250PLT-N-2	
XLK		30 x 40 mm	150 µm	TI150XLK-N-1	TI150XLK-N-2	Designed for very large bony defects, including ridge augmentation
			250 µm	TI250XLK-N-1	TI250XLK-N-2	
XL		30 x 40 mm	150 µm	TI150XL-N-1	TI150XL-N-2	Designed for very large bony defects, including ridge augmentation
			250 µm	TI250XL-N-1	TI250XL-N-2	
ATC		24 x 38 mm	150 µm	TI150ATC-N-1	TI150ATC-N-2	Designed for large extraction sites, including ridge augmentation
			250 µm	TI250ATC-N-1	TI250ATC-N-2	
PTC		38 x 38 mm	150 µm	TI150PTC-N-1	TI150PTC-N-2	Designed for large bony defects, including ridge augmentation
			250 µm	TI250PTC-N-1	TI250PTC-N-2	
PD		38 x 38 mm	150 µm	TI150PD-N-1	TI150PD-N-2	Designed for large bony defects, including distal extension of the posterior ridge
			250 µm	TI250PD-N-1	TI250PD-N-2	
K2		40 x 50 mm	150 µm	TI150K2-N-1	TI150K2-N-2	Designed for the largest bony defects, including ridge augmentation
			250 µm	TI250K2-N-1	TI250K2-N-2	



Most commonly sold articles

## Cytoplast™ MicroDerm

Allogenic acellular dermal matrix

Size	Thickness	Article no.
1 x 1 cm	1.2 +/- .02 mm	CMD1010NB
1 x 2 cm	1.2 +/- .02 mm	<b>CMD1020NB</b>
1 x 4 cm	1.2 +/- .02 mm	CMD1040NB
2 x 4 cm	1.2 +/- .02 mm	CMD2040NB



## Cytoplast™ RTM wound dressings

Absorbable wound dressings

Size	Size	Units/box	Article no.
Plug	1 x 2 cm	10	<b>CLMRTMPLUG10</b>
Foam	2 x 4 cm	10	CLMRTMFOAM10
Tape	2.5 x 7.5 cm	10	CLMRTMTAPE10



## creos™ wound dressings

Product type	Configuration/size	Thickness	Article no.
creos xenoplug	0.375 in x 0.75 in (1 cm x 2 cm)		WD62202
creos xenocote	0.75 in x 1.5 in (2 cm x 4 cm)	2 – 4 mm	WD62201
creos xenotape	1 in x 3 in (2.5 cm x 7.5 cm)	0.3 – 0.8 mm	WD62200

(10 per dispenser)

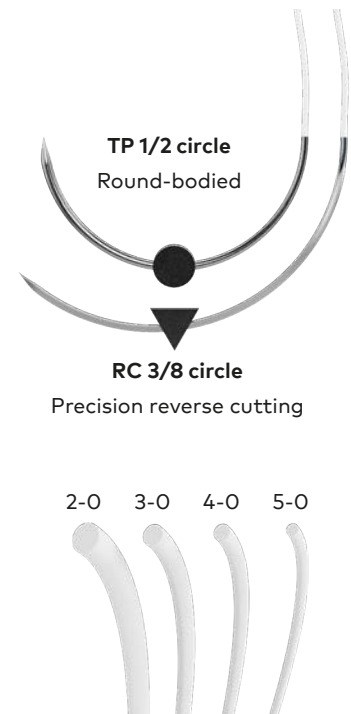
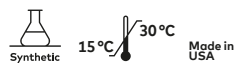


**Most commonly sold articles**

# Cytoplast™ PTFE

Non-absorbable PTFE suture – monofilament

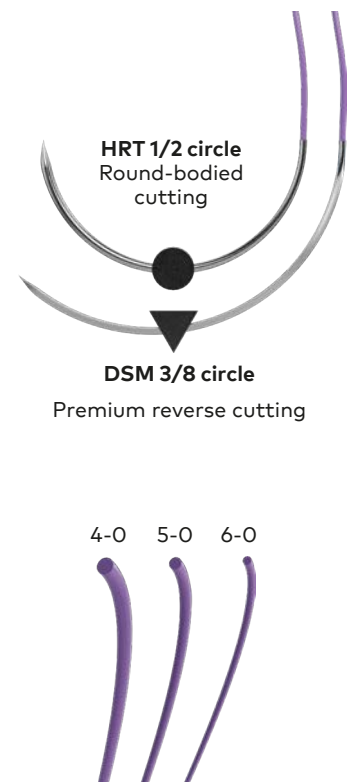
Needle shape	USP	Needle size	Needle color	Suture length 18 in. 12 units/box	Suture length 28 in. 12 units/box
<b>TP 1/2 circle</b> Round-bodied	4-0	13 mm		CS0618PERIO	CS0628PERIO
	2-0	19 mm		CS0418	CS0428
		16 mm		CS0518	CS0528
		19 mm		CS051819	CS052819
	3-0	16 mm	Black	CS0518BK	CS0528BK
19 mm		Black	CS051819BK	CS052819BK	
		13 mm		CS0618PREM	CS0628PREM
<b>RC 3/8 circle</b> Precision reverse cutting	4-0	16 mm		<b>CS0618RC</b>	CS0628RC
		13 mm		CS071813	CS072813
	5-0	16 mm		CS071816	CS072816
		13 mm		CS071813	CS072813



# Resorba® Glycolon™

Absorbable PGA/PCL sutures – monofilament

Needle shape	USP	Needle size	Needle color	Thread color	Suture length 18 in. 12 units/box	
<b>HRT 1/2 circle</b> Round-bodied cutting	4-0	18 mm	Silver	Violet	RMGOD01101	
	5-0	16 mm	Silver	Violet	RMGOD01100	
		6-0	10 mm	Silver	Violet	RMGOD01102
		16 mm	Silver	Violet	RMGOD01201	
	<b>DSM 3/8 circle</b> Premium reverse cutting	4-0	18 mm	Silver	Violet	<b>RMGOD01203</b>
13 mm			Black	Violet	RMGOD01210	
16 mm			Black	Violet	RMGOD01211	
5-0		16 mm	Silver	Violet	RMGOD01214	
		18 mm	Black	Violet	RMGOD01212	
		18 mm	Silver	Undyed	RMGOD01202	
6-0		13 mm	Silver	Undyed	RMGOD01200	
	13 mm	Silver	Undyed	RMGOD01213		



Most commonly sold articles



# Pro-Fix™ precision fixation system

Instruments and screws for fast and easy placement of membranes, bone blocks and tenting screws

## Membrane fixation kit Article PFMK20

Products included	Size	Qty.
Stabilization kit		1
Self-drilling membrane fixation screw	1.5 x 3 mm	20

## Bone fixation kit Article PFBK12S

Products included	Size	Qty.
Stabilization kit		1
Latch type pilot drill, 1.2 mm		1
	1.5 x 8 mm	2
Self-tapping bone fixation screw	1.5 x 10 mm	4
	1.5 x 12 mm	4
	1.5 x 14 mm	2

## Tenting kit Article PFTK12

Products included	Size	Qty.
Stabilization kit		1
	1.5 x 3 mm	4
Self-drilling tenting screw	1.5 x 4 mm	4
	1.5 x 5 mm	4

## Individual components

Description	1 unit/box
Cruciform driver blade, 76 mm	PFDB
Cruciform driver blade, 56 mm	PFDB56
Contra angle blade, 24 mm	PFDBCA
Stainless steel driver handle	PFDH
Autoclavable storage tray	PFT
Latch type pilot drill, 1.2 mm	HGMBI1001

## Stabilization kit includes

- Storage tray with screw organizer dial
- Stainless steel driver handle
- 76 mm cruciform driver blade
- 56 mm cruciform driver blade



Made in USA

Most commonly sold articles

## Membrane fixation screws

Size	5 units/box
1.5 x 3 mm	<a href="#">PFMF-5</a>
1.5 x 5 mm	PFMF5-5



## Bone fixation screws

Size	1 unit/box	5 units/box
1.5 x 8 mm	PFB8	<a href="#">PFB8-5</a>
1.5 x 10 mm	PFB10	PFB10-5
1.5 x 12 mm	PFB12	PFB12-5
1.5 x 14 mm	PFB14	PFB14-5



## Tenting screws

Size	Special	1 unit/box	5 units/box
1.5 x 3 mm polished neck		PFT3	<a href="#">PFT3-5</a>
1.5 x 4 mm polished neck	+4 mm threaded portion	PFT4	PFT4-5
1.5 x 5 mm polished neck		PFT5	PFT5-5
1.5 x 8 mm	Fully threaded	PFT8	n/a
1.5 x 10 mm	Fully threaded	PFT10	n/a



# Master-Pin-Control hybrid pin system

Precision fixation system

Description	Size	Article no.
Master-Pin-Control kit	34 pins	<a href="#">HGMBMP00</a>
	10 pins	HGMBMPBA



Made in Germany

## Individual components

Description	Size	Article no.
Master-Pin-Control replacement pins	10/pkg	<a href="#">HGMP10</a>
	50/pkg	HGMP50
	100/pkg	HGMP100
Master-Pin longer screwdriver		HGMP15
Master-Pin-Control decortication bur		HGM203S-0120-RA



Most commonly sold articles



Connect to  
Nobel Biocare  
Online store

# References

## creos™ xenogain

1. Nobel Biocare, data on file.
2. Rhee S-H, Park HN, Seol Y-J et al. Effect of heat-treatment temperature on the osteoconductivity of the apatite derived from bovine bone. 2006 Key Engineering Materials 309-311:41-44 [Read](#)
3. Arrighi I, Wessing B, Rieben A, et al. Resorbable collagen membranes expansion in vitro. J Dent Res 2014;93 (Spec Iss B):631 [Read on Pubmed](#)
4. Park JB, et al. Maxillary sinus floor augmentation using deproteinized bovine bone-derived bone graft material (OCS-B). Clinical and histologic findings in humans. The Journal of the Korean Dental Association. 2007;45(8):491-99 [Read on Pubmed](#)
5. Shin S-Y, et al. Long-term results of new deproteinized bovine bone material in a maxillary sinus graft procedure. J Periodontal Implant Sci. 2014;44;259-64. [Read on Pubmed](#)
6. Aleksic Z, Milikovic I, Lazic Z, et al. A multicenter clinical investigation demonstrates bone regeneration in severe horizontal defects in the posterior mandible using creos™ xenoprotect: Interim results. J Clin Periodontol 2018;45(S19):306 [Read](#)
7. Park HN, Han, SH, Kim KW, et al. A study on the safety and efficacy of bovine bone-derived bone graft material (OCS-B). J Korean Acad Periodontol. 2005 Jun;35(2):335 – 43 [Read](#)
8. Kim Y-T, et.al. Periodontal Repair on Intrabony Defects treated with Anorganic Bovine-derived Xenograft. J Korean Acad Periodontol. 2007;37(3):489 – 96
9. Fernandez de Grado G, Keller L, Idoux-Gillet Y et al. Bone substitutes: a review of their characteristics, clinical use, and perspectives for large bone defects management. Journal of Tissue Engineering Volume 9: 1–18, 2018 [Read on Pubmed](#)
10. Zhang K, Fan Y, Dunne N et al. Effect of microporosity on scaffolds for bone tissue engineering. Regenerative Biomaterials, 2018, 115–124 [Read on Pubmed](#)

## creos™ xenoprotect

1. Aleksic Z. A multicenter clinical investigation demonstrates bone regeneration in severe horizontal defects in the posterior mandible using creos xenoprotect: Interim results. Conference: Europerio 9, July 2018. [Read](#)
2. Wessing B, Emmerich M, Bozkurt A. Horizontal ridge augmentation with a novel resorbable collagen membrane: a retrospective analysis of 36 consecutive patients. Int J Periodontics Restorative Dent 2016;36(2):179–187. [Read on Pubmed](#)
3. Bozkurt A, Apel C, Sellhaus B, et al. Differences in degradation behavior of two non-cross-linked collagen barrier membranes: an in vitro and in vivo study. Clin Oral Impl Res; 2014; 25(12):1403-1411 [Read on Pubmed](#)
4. Gasser A, Wessing B, Eummelen L, et al. Mechanical stability of collagen membranes: an in vitro study. J Dent Res 2016;95(Spec Iss A): 1683 [Read](#)
5. Wessing B, Urban I, Montero E, et al. A multicenter randomized controlled clinical trial using a new resorbable non-cross-linked collagen membrane for guided bone regeneration at dehiscenced single implant sites: interim results of a bone augmentation procedure. Clin Oral Impl Res; 2017;28(11):e218–e226. [Read on Pubmed](#)
6. Sanz-Sanchez I, Wessing B, Polizzi G, et al. Randomized clinical trial comparing two resorbable collagen membranes demonstrates good bone formation and soft tissue healing with GBR at single implant sites with dehiscence defects. J Clin Periodontol 2018;45(S19):19–20 [oral presentation]. [Read](#)
7. Omar O, Dahlin A, Gasser A, et al. Tissue dynamics and regenerative outcome in two resorbable noncross-linked collagen membranes for guided bone regeneration: A preclinical molecular and histological study in vivo. Clin Oral Impl Res; 2018;29(1):7–19 [Read on Pubmed](#)
8. Aleksic Z, Milikovic I, Lazic Z, et al. A multicenter clinical investigation demonstrates bone regeneration in severe horizontal defects in the posterior mandible using creos™ xenoprotect: Interim results. J Clin Periodontol 2018;45(S19):306 [Read](#)
9. Raz P, Brosh T, Ronen G, Tal H. Tensile Properties of Three Selected Collagen Membranes. Biomed Res Int. 2019 Dec 5;2019:5163603. doi: 10.1155/2019/5163603. PMID: 31886222; PMCID: PMC6915138. [Read on Pubmed](#)

10. Jäger M, Degistirici O, Knipper A, Fischer J, Sager M, Krauspe R. Bone healing and migration of cord blood-derived stem cells into a critical size femoral defect after xenotransplantation. *J Bone Miner Res.* 2007;22(8): 1224-33. [Read on Pubmed](#)
11. Redemagni M, Mascetti T, Garlini G. Post-Extractive Immediate Implant Placement and Immediate Provisionalization at Sites Requiring Buccal Bone Regeneration. *EC Dental Science.* 2019(18.6): 1207-16. [Read](#)
12. Cadenas-Vacas G, Martínez-Rodríguez N, Barona-Dorado C, Sánchez-Labrador L, Cortés-Bretón Brinkmann J, Meniz-García C, et al. Calcium Phosphate Modified with Silicon vs. Bovine Hydroxyapatite for Alveolar Ridge Preservation: Densitometric Evaluation, Morphological Changes and Histomorphometric Study. *Materials (Basel)* [Internet]. 2021;14(4): 940. [Read](#)
13. Bruyckere T de, Cosyn J, Younes F, Hellyn J, Bekx J, Cleymaet R, et al. A randomized controlled study comparing guided bone regeneration with connective tissue graft to reestablish buccal convexity: One-year aesthetic and patient-reported outcomes. *Clin Oral Implants Res.* 2020;31(6): 507-16. [Read on Pubmed](#)
14. J. Jiménez Garcia, S. Berghezán, J.M.M. Caramês, M.M. Dard, D.N.S. Marques, Effect of cross-linked vs non-cross-linked collagen membranes on bone: A systematic review, *J Periodont Res.* 2017;1-10. [Read on Pubmed](#)

#### Related studies/articles

- Bruyckere T de, Eekhout C, Eghbali A, Younes F, Vandekerckhove P, Cleymaet R, et al. A randomized controlled study comparing guided bone regeneration with connective tissue graft to re-establish convexity at the buccal aspect of single implants: A one-year CBCT analysis. *J Clin Periodontol.* 2018;45(11): 1375-87. [Read on Pubmed](#)
- González Regueiro I, Martínez Rodríguez N, Barona Dorado C, Sanz-Sánchez I, Montero E, Ata-Ali J, et al. Surgical approach combining implantoplasty and reconstructive therapy with locally delivered antibiotic in the treatment of peri-implantitis: A prospective clinical case series. *Clin Implant Dent Relat Res.* 2021;23(6): 864-73. [Read on Pubmed](#)

## Dense PTFE membranes

1. Fotek PD, Neiva RF, Wang HL. Comparison of dermal matrix and polytetrafluoroethylenemembrane for socket bone augmentation: a clinical and histologic study. *J Periodontol* 2009;80:776-785. [Read on Pubmed](#)
2. Barboza EP, Francisco BS, Ferreira VF. Soft tissue enhancement using non-expanded PTFE membranes without primary closure [abstract]. Presented at the 2008 Research Forum Poster Session. Annual Meeting of the American Academy of Periodontology (AAP) in Seattle, WA, September 6-9, 2008.
3. Ronda M, Rebaudi A, Torelli L, Stacchi C. Expanded vs. dense polytetrafluoroethylene membranes in vertical ridge augmentation around dental implants: a prospective randomized controlled clinical trial. *Clin Oral Impl Res;* 2014 Jul;25(7):859-66. [Read on Pubmed](#)
4. Barboza EP, Stutz B, Ferreira VF, Carvalho W. Guided bone regeneration using nonexpanded polytetrafluoroethylene membranes in preparation for dental implant placements - a report of 420 cases. *Implant Dent.* 2010;19:2-7. [Read on Pubmed](#)
5. Hoffman O, Bartee BK, Beaumont C, Kasaj A, Deli G, Zafiropoulos GG. Alveolar bone preservation in extraction sockets using non-resorbable dense PTFE membranes: A retrospective non-randomized study. *J Periodontol* 2008;79:1355-1369. [Read on Pubmed](#)
6. Principles for Vertical Ridge Augmentation in the Atrophic Posterior Mandible: A Technical Review. Urban IA, Monje A, Lozada J, wang HL. *Int J Periodontics Restorative Dent.* 2017 Sep/Oct;37(5):639-645.
7. Vertical Ridge Augmentation and Soft Tissue Reconstruction of the Anterior Atrophic Maxillae: A Case Series. Urban IA, Monje A, wang HL. *Int J Periodontics Restorative Dent.* 2015 Sep-Oct;35(5):613-23.
8. Partial lateralization of the nasopalatine nerve at the incisive foramen for ridge augmentation in the anterior maxilla prior to placement of dental implants: a retrospective case series evaluating self-reported data and neurosensory testing. Urban I, Jovanovic SA, Buser D, Bornstein MM. *Int J Periodontics Restorative Dent.* 2015 Mar-Apr;35(2):169-77.
9. Vertical ridge augmentation with titanium-reinforced, dense-PTFE membranes and a combination of particulated autogenous bone and anorganic bovine bone-derived mineral: a prospective case series in 19 patients. Urban IA, Lozada JL, Jovanovic SA, Nagursky H, Nagy K. *Int J Oral Maxillofac Implants.* 2014 Jan-Feb;29(1):185-93.

## Other collagen membranes

### Related studies/articles

Histomorphometric analysis of bone regeneration using a dual layer of membranes (dPTFE placed over collagen) in fresh extraction sites: a canine model. Al-Hezaimi K, Iezzi G, Rudek I, Al-Daafas A, Al-Hamdan K, Al-Rasheed A, Javed F, Piattelli A, Wang Hl. *J Oral Implantol.* 2015 Apr;41(2):188-95.

Efficacy of using a dual layer of membrane (dPTFE placed over collagen) for ridge preservation in fresh extraction sites: a micro-computed tomographic study in dogs. Al-Hezaimi K, Rudek I, Al-Hamdan KS, Javed F, Nooh N, Wang HL. *Clin Oral Implants Res.* 2013 Oct;24(10):1152-7.

Guided bone regeneration in long-bone defects with a structural hydroxyapatite graft and collagen membrane. Guda T, Walker JA, Singleton Bm, Hernandez JW, Son JS, Kim SG, Oh DS, Appleford MR, Ong JL, Wenke JC. *Tissue Eng Part A.* 2013 Sep;19(17-18):1879-88. doi: 10.1089/ten.TEA.2012.0057. Epub 2012 Sep 14.

## Collagen wound dressing

1. Basma, H. S., Saleh, M. H. A., Abou-Arraj, R. V., Imbrogno, M., Ravida, A., Wang, H. L., Li, P., & Geurs, N. (2023). Patient-reported outcomes of palatal donor site healing using four different wound dressing modalities following free epithelialized mucosal grafts: A four-arm randomized controlled clinical trial. *Journal of periodontology*, 94(1), 88–97. [Read on Pubmed](#)

## Non-absorbable sutures

1. Abellán, D., Nart, J., Pascual, A., Cohen, R. E., & Sanz-Moliner, J. D. (2016). Physical and Mechanical Evaluation of Five Suture Materials on Three Knot Configurations: An in Vitro Study. *Polymers*, 8(4), 147. [Read](#)

### Related studies/articles

Taysi AE, Ercal P, Sismanoglu S. Comparison between tensile characteristics of various suture materials with two suture techniques: an in vitro study. *Clin Oral Investig.* 2021 Apr 14. [Read on Pubmed](#)

Silverstein LH, Kurtzman GM, Shatz PC. Suturing for optimal soft-tissue management. *J Oral Implantol.* 2009;35:82-90. [Read on Pubmed](#)

Silverstein LH. Suturing principles: Preserving needle edges during dental suturing. *PPAD.* 2005;17:562-564.

Urban IA, Lozada JL, Wessing B, Suárez-López del Amo F, Wang HL. Vertical Bone Grafting and Periosteal Vertical Mattress Suture for the Fixation of Resorbable Membranes and Stabilization of Particulate Grafts in Horizontal Guided Bone Regeneration to Achieve More Predictable Results: A Technical Report. *Int J Periodontics Restorative Dent.* 2016;36(2):153-159. doi:10.11607/prd.2627 [Read on Pubmed](#)

## Absorbable sutures

### Related studies/articles

Physical and Mechanical Evaluation of Five Suture Materials on Three Knot Configurations: An in Vitro Study. Desire Abellán, José Nart, Andrés Pascual, Robert E. Cohen, Javier D. Sanz-Moliner. *Polymers*; 2016, 8(4), 147.

Vertical Bone Grafting and Periosteal Vertical Mattress Suture for the Fixation of Resorbable Membranes and Stabilization of Particulate Grafts in Horizontal Guided Bone Regeneration to Achieve More Predictable Results: A Technical Report. Urban IA, Lozada JL, Wessing B, Suárez-López Del Amo F, Wang HL. *Int J Periodontics Restorative Dent.* 2016 Mar-Apr;36(2):153-9.

Suturing for optimal soft-tissue management. Silverstein LH, Kurtzman GM, Shatz PC. *J Oral Implantol.* 2009;35:82-90.

Suturing principles: Preserving needle edges during dental suturing. Silverstein LH. *PPAD* 2005;17:562-564.

Vertical Ridge Augmentation and Soft Tissue Reconstruction of the Anterior Atrophic Maxillae: A Case Series. Urban IA, Monje A, Wang HL. *Int J Periodontics Restorative Dent.* 2015 Sep-Oct;35(5):613-23.

## Fixation and tenting systems

### Related studies/articles

Plonka, A. B., Urban, I. A., & Wang, H. L. (2018). Decision Tree for Vertical Ridge Augmentation. *The International journal of periodontics & restorative dentistry*, 38(2), 269–275. [Read on Pubmed](#)

Urban, I. A., Monje, A., Lozada, J., & Wang, H. L. (2017). Principles for Vertical Ridge Augmentation in the Atrophic Posterior Mandible: A Technical Review. *The International journal of periodontics & restorative dentistry*, 37(5), 639–645. [Read on Pubmed](#)



Gultekin, B. A., Cansiz, E., & Borahan, M. O. (2017). Clinical and 3-Dimensional Radiographic Evaluation of Autogenous Iliac Block Bone Grafting and Guided Bone Regeneration in Patients With Atrophic Maxilla. *Journal of oral and maxillofacial surgery : official journal of the American Association of Oral and Maxillofacial Surgeons*, 75(4), 709–722. <https://doi.org/10.1016/j.joms.2016.11.019> [Read on Pubmed](#)

Wessing B, Urban I, Montero E, et al. A multicenter randomized controlled clinical trial using a new resorbable non-cross-linked collagen membrane for guided bone regeneration at dehiscenced single implant sites: interim results of a bone augmentation procedure. *Clin Oral Impl Res*; 2017;28(11):e218–e226. [Read on Pubmed](#)

Principles for Vertical Ridge Augmentation in the Atrophic Posterior Mandible: A Technical Review. Urban IA, Monje A, Lozada J, Wang HL. *Int J Periodontics Restorative Dent*. 2017 Sep/Oct;37(5):639-645.

Vertical Ridge Augmentation and Soft Tissue Reconstruction of the Anterior Atrophic Maxillae: A Case Series. Urban IA, Monje A, Wang HL. *Int J Periodontics Restorative Dent*. 2015 Sep-Oct;35(5):613-23.

Partial lateralization of the nasopalatine nerve at the incisive foramen for ridge augmentation in the anterior maxilla prior to placement of dental implants: a retrospective case series evaluating self-reported data and neurosensory testing. Urban I, Jovanovic SA, Buser D, Bornstein MM. *Int J Periodontics Restorative Dent*. 2015 Mar-Apr;35(2):169-77.

Vertical ridge augmentation with titanium-reinforced, dense-PTFE membranes and a combination of particulated autogenous bone and anorganic bovine bone-derived mineral: a prospective case series in 19 patients. Urban IA, Lozada JL, Jovanovic SA, Nagursky H, Nagy K. *Int J Oral Maxillofac Implants*. 2014 Jan-Feb;29(1):185-93.

---

## Order online

Order our complete range of implants, prefabricated prosthetics and regenerative solutions 24 hours a day through the Nobel Biocare online store.

[store.nobelbiocare.com](https://store.nobelbiocare.com)

---

## Order by phone

Contact your sales representative, or call our customer service team.

**800 322 5001 – US**

**800 939 9394 – Canada**



[nobelbiocare.com](https://nobelbiocare.com)



89069 A NA 2403 (Rev 01, 03/24) Printed in USA © Nobel Biocare USA, LLC, 2024. All rights reserved.

Disclaimer: Nobel Biocare, the Nobel Biocare logotype and all other trademarks are, if nothing else is stated or is evident from the context in a certain case, trademarks of Nobel Biocare. Please refer to [nobelbiocare.com/trademarks](https://nobelbiocare.com/trademarks) for more information. Product images are not necessarily to scale. All product images are for illustration purposes only and may not be an exact representation of the product. Some products may not be regulatory cleared/released for sale in all markets. Please contact the local Nobel Biocare sales office for current product assortment and availability. Caution: Federal (United States) law or the law in your jurisdiction may restrict this device to sale by or on the order of a dentist or a physician. See Instructions For Use for full prescribing information, including indications, contraindications, warnings and precautions.

creos™ allo.gain and creos™ allo.protect are manufactured by Solvita, formerly Community Tissue Services (CTS), 2900 College Drive, Kettering, OH 45420, USA, and distributed by Nobel Biocare. creos™ xenogain and creos™ xenogain collagen are manufactured for/by Nibec Co. Ltd., Chungcheongbuk-do, 27816 Korea, and distributed by Nobel Biocare. creos™ xenoprotect is manufactured for/by Matricel GmbH, Kaiserstrasse 100, 52134 Herzogenrath, Germany, and distributed by Nobel Biocare. Cytoplast™ RTM Collagen and RTM Wound Dressings are manufactured by Collagen Matrix, Inc. 15 Thornton Road, Oakland, NJ 07436, USA, and distributed by Nobel Biocare. Cytoplast™ Non-Resorbable Barrier Membranes, Sutures and Pro-Fix™ are manufactured by Osteogenics Biomedical, Inc., 4620 71st Street, Bldg 78-79, Lubbock, TX 79424, USA, and distributed by Nobel Biocare. Cytoplast™ MicroDerm is processed, packaged and labeled by Surgenex®, LLC, 15444 N. 76th St., C110 Scottsdale, AZ 85260, USA, and distributed by Nobel Biocare. creos™ xenocote, creos™ xenotape and creos™ xenoplug are manufactured by Integra LifeSciences Corporation, 311 Enterprise Drive, Plainsboro, NJ 08536, USA, and distributed by Nobel Biocare. Resorba® Glycolon™ Absorbable Sutures are manufactured by Resorba® Repair and Regenerate an Advanced Medical Solutions Group plc company, Am Flachmoor 16, D-90475 Nuremberg, Germany, and distributed by Nobel Biocare. The Master-Pin-Control Bone Management® system is manufactured by Hager & Meisinger GmbH, Hansemannstr. 10, 41468 Neuss, Germany, and distributed by Nobel Biocare.